

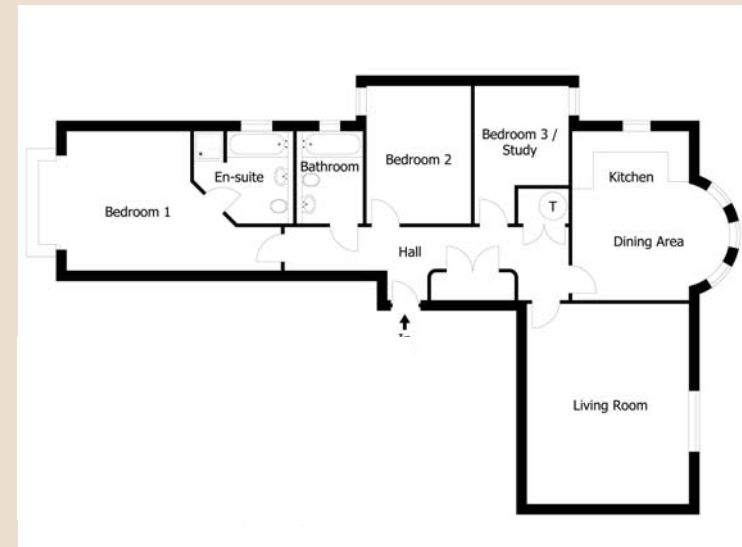
Apartment 2 - Ground Floor / Apartment 4 - First Floor

Apartments 2 and 4 of Snowdrop House offer two/three bedrooms, two bathrooms and a spacious sitting room and breakfast kitchen.

The sitting room has a large window giving views of the grounds at the rear of the property. The kitchen has a range of integrated appliances in the gloss and walnut finish units, and the breakfast area extends into the unusual semi-circular bay window, which overlooks the garden. The master bedroom has a large feature window overlooking the approach to Snowdrop House, and its ensuite has both a bath and separate shower enclosure. Both the master en-suite and the house bathroom feature Duravit concealed sanitaryware and Grohe showers. Leading off the hall is a further double bedroom, study/bedroom three and a useful storage cupboard.

Room Dimensions (1270sqft total floor area)

	Metric	Imperial
Sitting Room	5513 x 4576	18'1" x 15'
Breakfast Kitchen	4823 x 4420 (red to 3274)	15'10" x 14'6" (red to 10'9")
Bedroom 1	3948 (red to 1160) x 6920 (red to 3554)	12'11" (red to 3'10") x 22'8" (red to 11'8")
Bedroom 1 Ensuite	2619 x 2538 (inc splay)	8'7" x 8'4"
Bedroom 2	3909 x 2962	12'10" x 9'9"
Bedroom 3/Study	3909 (red to 2809) x 2620 (red to 920)	12'10" (red to 9'3") x 8'7" (red to 3')
Bathroom	2619 x 1623	8'7" x 5'4"



PLEASE NOTE: photographs are for illustration purposes only. While floorplans and dimensions are as accurate as possible, measurements have been scaled from plans and should not be relied upon as accurately describing any of the specific matters prescribed by any order made under the Property Misdescriptions Act 1991. Whitfield Homes Ltd operates a policy of continuous development and features and measurements may vary during construction.