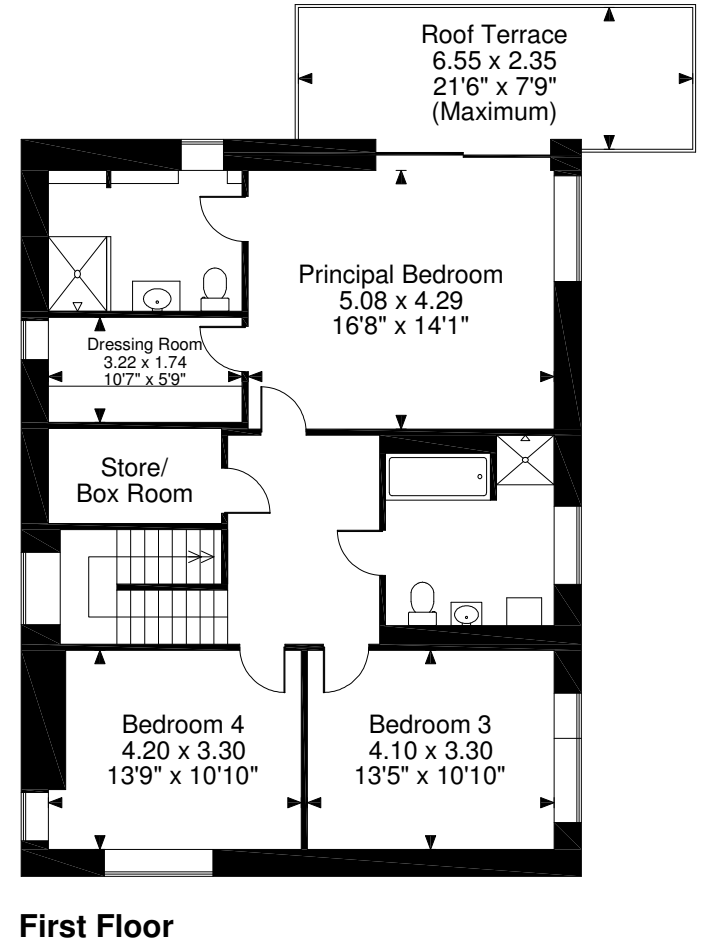
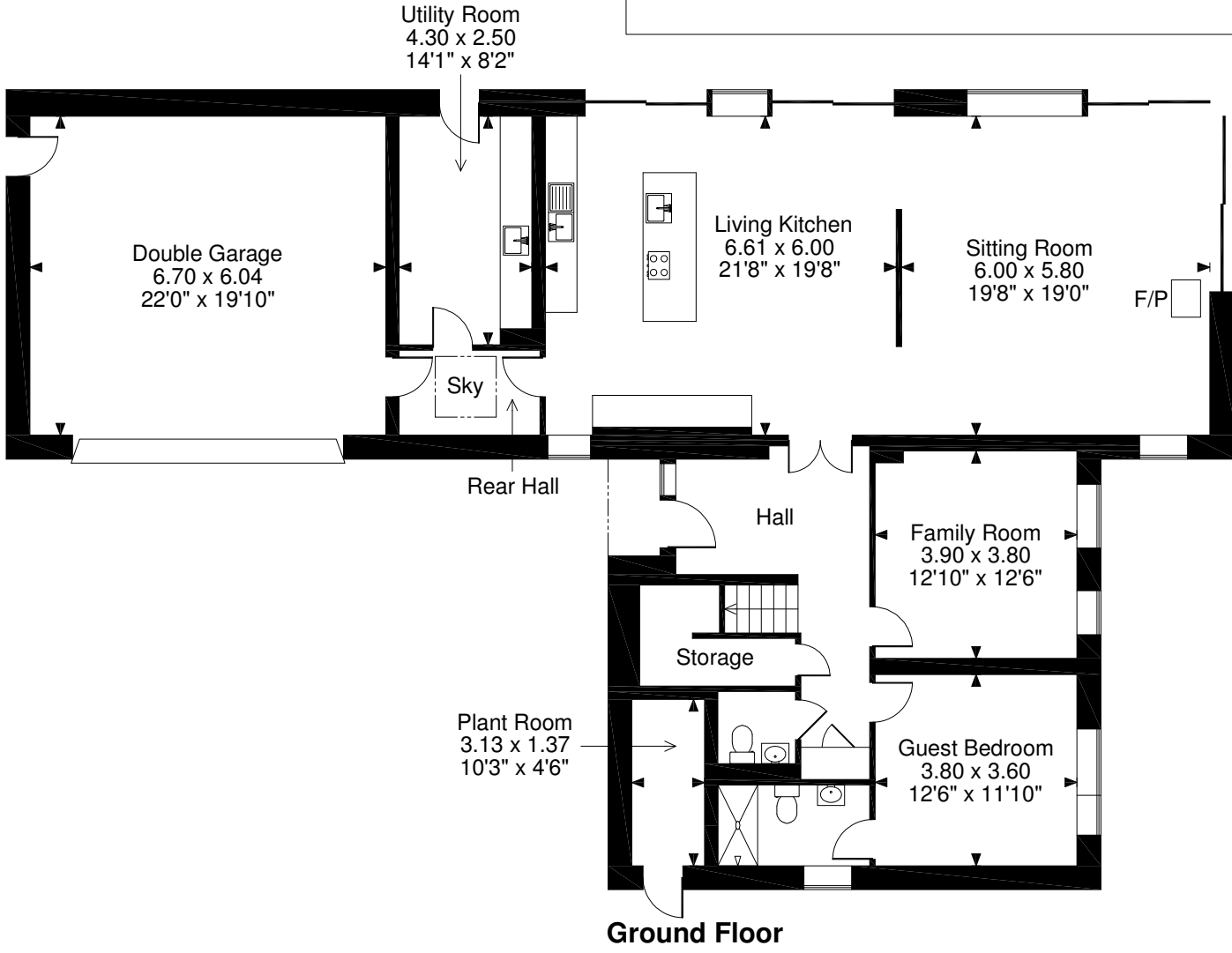
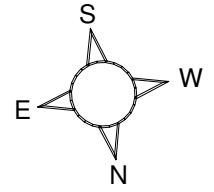


Signal House, Hampsthwaite
Approximate Gross Internal Area
Main House = 2,665 sq ft / 248 sq m
Roof Terrace = 158 sq ft / 15 sq m
Double Garage = 433 sq ft / 40 sq m
Total = 3,098 sq ft / 288 sq m



FOR ILLUSTRATIVE PURPOSES ONLY - NOT TO SCALE

The position & size of doors, windows, appliances and other features are approximate only.

© ehouse. Unauthorised reproduction prohibited. Drawing ref. dig/8409070/SS